

The 5 Themes of Geography



Chapter 1-Section 1



MR. HELP

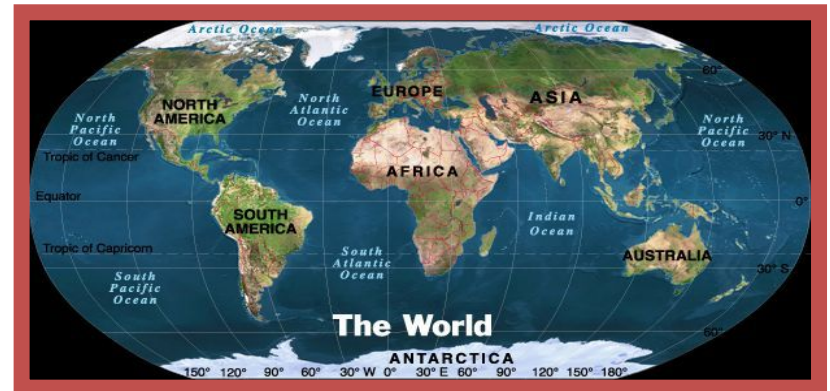
- If you can remember this little saying, it will HELP you to remember the 5 Themes of Geography!
 - **M**ovement
 - **R**egion
 - **H**uman-**E**nvironment Interaction
 - **L**ocation
 - **P**lace

Theme 1: Location

- **Where is It?**
- **Why is It There?**

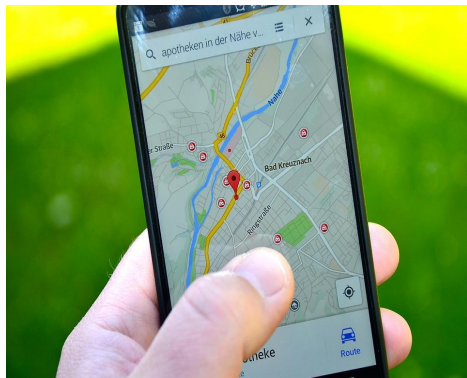
Two Types of Location

1. Absolute
2. Relative



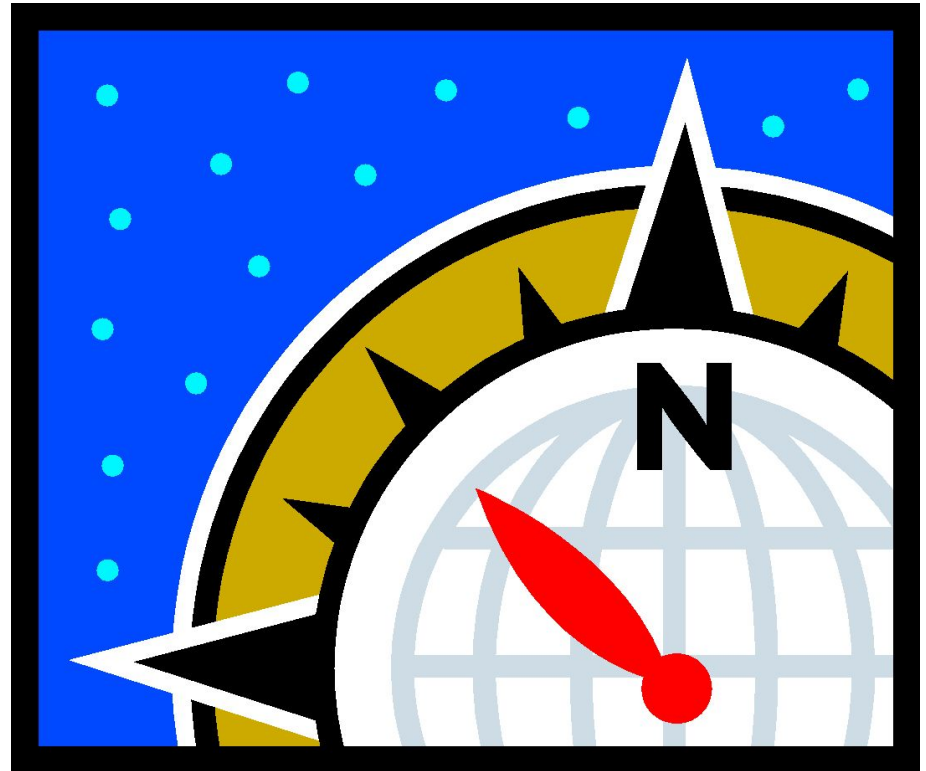
Absolute Location

- A specific, exact place on the Earth's surface
- Uses a grid system
- Latitude and longitude
- A global address



Relative Location

- **Where a place is in relation to another place**
- **Uses directional words to describe the location**



Relative Location(continued)

Cardinal Directions

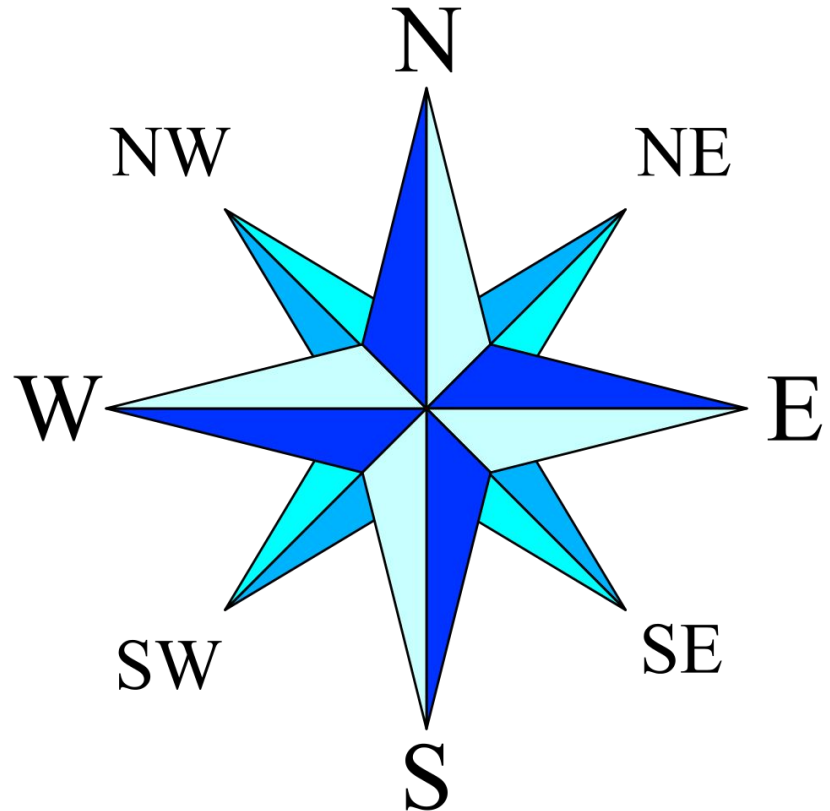
Never

Eat

Slimy

Worms

Intermediate Directions



Theme 2: Place

Physical Characteristics

- **Land Features**
- **Mountains, plains, and plateaus**
- **Climate**
- **Bodies of Water**



Theme 2: Place

Human Characteristics



- **People**
- **Culture**
- **Language**
- **Religion**
- **Architecture of Buildings and Landmarks**
- **Layout of Cities**

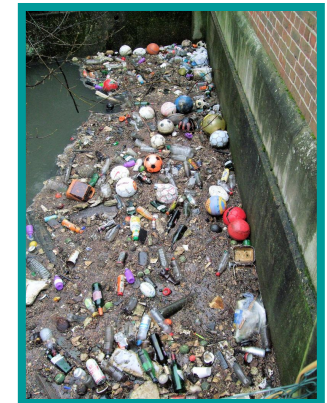


Theme 3: Human Environment Interaction

How People Interact With Their Environment

People . . .

- 1. Adapt* to Their Environment
- 2. Modify* Their Environment
- 3. Depend* on Their Environment





Theme 4: Movement

The Mobility of

- People
- Goods
- Ideas

**How Places are
linked to one
another and the
world**



Theme 5: Regions

What Places Have in Common

- **Political Regions**
- **Landform Regions**
- **Agricultural Regions**
- **Cultural Regions**

