

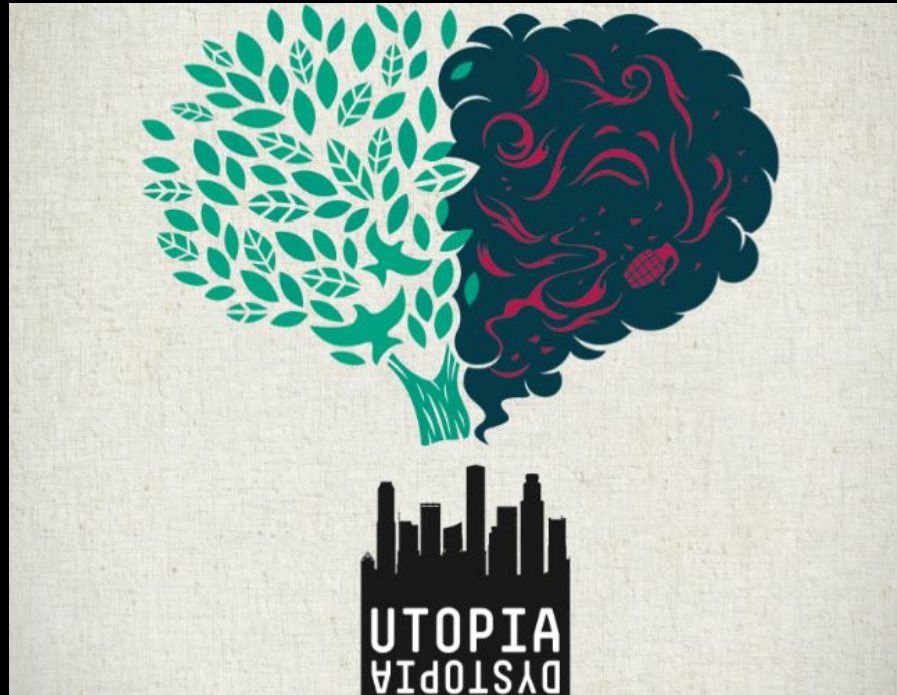
Dystopian Literature

I can explain a dystopian society.

I can make predictions about the
setting, conflict, and characters in
The City of Ember.



There are two common fictional societies in literature...



What is a utopia?

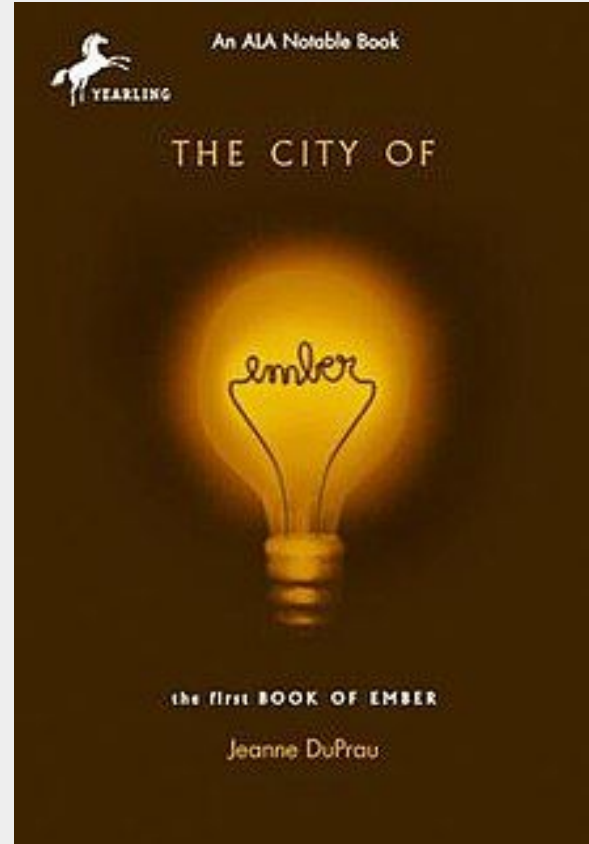
- A “perfect” world or society
- Peaceful government
- Equality for all citizens
- Access to education, healthcare, etc.
- There are no problems

What is a dystopia?

- **Totalitarian** government
- **Propaganda** is used to control the citizens of the society
- Information, independent thinking, and freedom are restricted
- The citizens worship the figurehead or concept
- Citizens are under constant surveillance
- Citizens possess a fear of the outside world

Considering what you know about dystopian societies...

What predictions can we make about the setting of *The City of Ember*?



Protagonists in a Dystopian Society

- Often feel trapped
- Questions the social and political systems that exist
- Feel that something is terribly wrong with their society
- Help the reader to see everything that is wrong with their society through their perspective



Making Connections

What connections can we make?

Why make connections?



text to self

YOU CAN CONNECT THE TEXT TO YOUR OWN LIFE, FEELINGS, AND EXPERIENCES



text to text

YOU CAN CONNECT THE TEXT TO ANOTHER TEXT (AUTHOR'S CRAFT, CHARACTERS, EVENTS, ETC.)



text to world

YOU CONNECT THE TEXT TO AN EVENT THAT HAS OCCURRED OR IS HAPPENING IN THE WORLD



text to media

YOU CONNECT THE TEXT TO A MOVIE, TV SHOW, OR OTHER MEDIA CONTENT

How do readers make “deep” connections?

Deep Connection


- Making connections between text and self, text, and world
- Connection deepens and extends our understanding of the text

Surface/Flat Connection


- Making connections between text and self, text, and world
- Connection does not help us to better understand the text

Deep (Meaningful) Connections...

- Add to our mental image
- Do not distract us or make us forget what we are reading
- Add to our thinking and understanding of the text


Making Connections 

Avoid surface connections!



We both like dogs.

Make DEEP connections!



I connected with Marty when he said that "something hurt inside" when he realized Shiloh had been abused. When I see photos of abused or injured dogs, I feel a deep pain in my heart, too, and I want to cry.

I can connect with Marty in Shiloh because we both have sisters.

When Marty lied to his sister, Dara Lynn, and told her that he was looking for a snake, it reminded me of how I sometimes lie to my younger sister about having to do homework so she will leave me alone.

We think...

- Something similar happened to me when...
- I can relate to this part of the text because...
- Similarly, in another book I read...
- This part of the story reminds me of...

Text to Text

The lack of resources (new items, electricity, etc.) in the City of Ember **is similar to** the situation in Katniss's poor town in *The Hunger Games*. In both cities, there is not a lot of food and people save whatever they can.

Text to Self

The scene where Lina laughs with the other students at Doon after he slid down the pole **reminds me of when** I was laughed at after slipping on stage in 10th grade. My friends laughed and I was really embarrassed, like Doon was with Lina.

Connections

Text to Media

Text to World



Setting & Mood

What is the setting of a story?

How does the setting of a story
affect the mood?

What is the setting of a story?



Location



Time



Weather

Why is the setting important to a story?

Sets a specific scene

Can impact a character

Allows the reader to
visualize where a story
takes place

Establishes the mood or
atmosphere of a text

Can impact the plot

How do these different settings impact stories?



TONE and MOOD

Tone: The author's attitude towards the subject, the readers, or the characters in a text

Mood: The feeling the reader gets when reading a text

Tone ≠ Mood

He approached the task with sheer determination. He had studied his plans carefully, spent hours preparing and was sure of his approach. The hours he spent practicing were grueling and exhausting but he was ready. This was the year he would win the pie eating contest at school.

What is the mood?

**My annoying brother likes to drive me crazy.
There is no other who is that lazy.
He whines to Mom and Dad night and day
Until he eventually gets his way.
What is a sister to do
When he screams 'til he's blue?
There is no way to win,
For he gets under your skin.
He does his best to kill all joy.
Oh, how my brother does annoy!**

**What is the
MOOD?**

The night it happened was one we will never forget. The wind was screeching outside as rain pounded against the window. We had lost electricity hours ago and had nothing but candles to light the house. The battery powered radio we had was broadcasting a warning to lock your doors and stay inside; there was a killer on the loose.

What is the
MOOD?

What are some words to describe the mood?

- | | | |
|-----------------|---------------|---------------|
| ☞ Light-hearted | ☞ Welcoming | ☞ Suspenseful |
| ☞ Playful | ☞ Liberating | ☞ Foreboding |
| ☞ Tender | ☞ Tense | ☞ Painful |
| ☞ Warm | ☞ Gloomy | ☞ Threatening |
| ☞ Hopeful | ☞ Violent | ☞ Terrifying |
| ☞ Peaceful | ☞ Pessimistic | ☞ Lonely |
| ☞ Idyllic | ☞ Cold | |
| ☞ Joyous | ☞ Confining | |
| ☞ Inclusive | ☞ Haunting | |

How does the text make you feel?