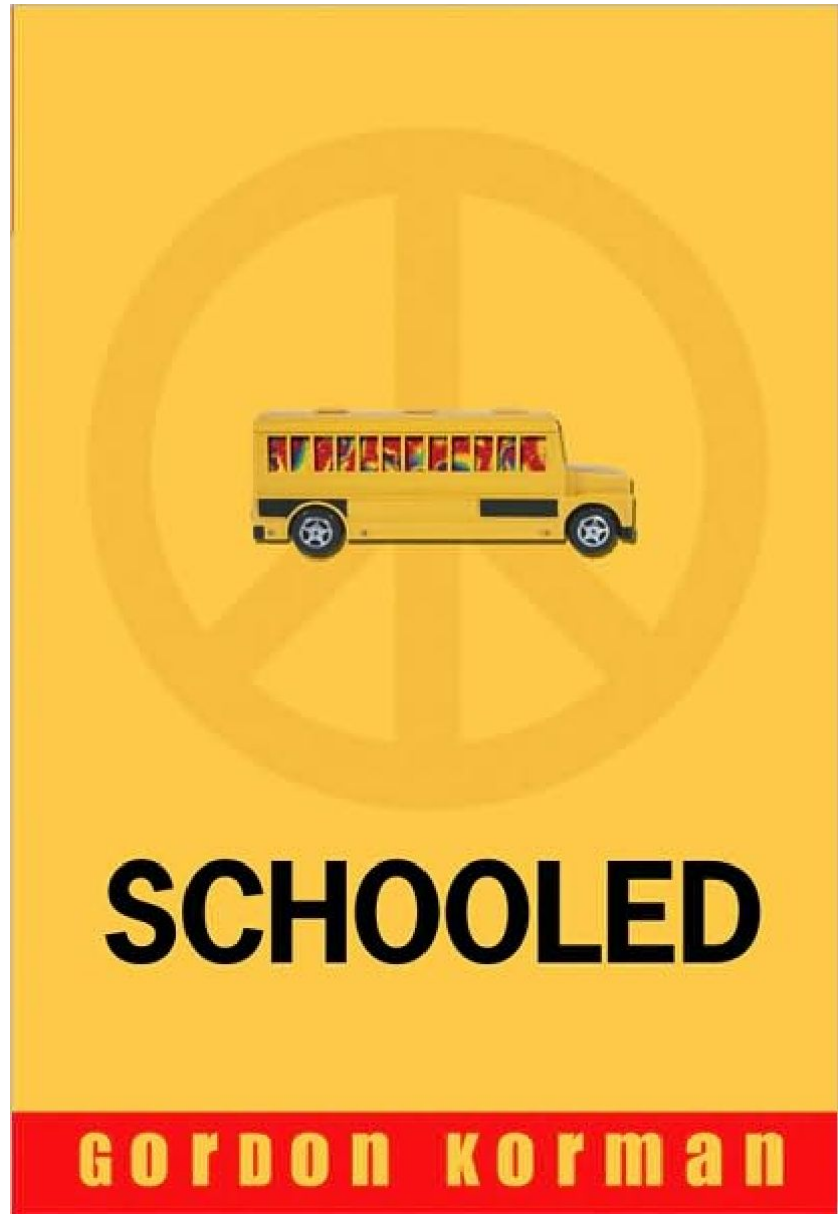


Schooled
by
Gordon
Korman



Novel Notebook Set Up

- 1 page for Characters (Front and Back)
- ½ page for Setting
- 1 page for Plot (F & B)
- 3 pages for Vocabulary (F & B)
- 2 pages for “Cap-isms” (F & B)

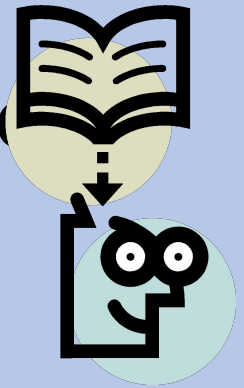
Chapters 1-3

Vocabulary

- Commune
- Psychedelic
- Sitar
- Tarmac
- Conviction

Chapters 1-3

- Explain the type of life Cap has been leading at Garland.
- How is his life about to change dramatically?
- Have you ever daydreamed about being homeschooled?
- What do you think it would be like?



Vocabulary Chapters 4-6

- Autonomous
- Trajectory
- Apex
- Exhilarated
- Facsimile

Chapters 4-6

- Describe where Cap ends up while his grandmother, Rain, recovers?
- What would be the most difficult thing to understand about middle school life if you have never been in a school before?
- Choose one question from the novel list to answer



Vocabulary 7-9

- Tyrant
- Mentor
- Contortion
- Shindig
- Faze

Chapters 7-9

- How is Cap treated by Sophie, Zach, Hugh, and Naomi?
- How do people decide whether to be cruel or kind to someone who is new?
- Do you blame Sophie for her reaction to him? Why or why not?
- Would you want Cap to be living in your house? Why or why not?

Vocabulary 10-12

Berserk

Raucous

Erratically

Foyer

Lamented

Chapters 10-12

Contrast the stereotype of Cap with the real Capricorn Anderson.

If you were Cap, would you have driven the bus to the emergency room or pulled over as ordered by the dispatcher? Explain your choice.

Choose a question from the novel list to respond to.

Vocabulary 13-15

Profoundly

Exfoliating

Reconvened

Supple

Chapters 13-15

- What kind of person is Sophie's dad? Give evidence to support your answer.
- How does Hugh feel about being called Cap's friend?
- After the tie-dying project, Hugh notices that for the first time there are no spitballs in Cap's hair. What might this mean for Hugh?

Chapters 16-21

Guru

Philanthropy

Cronies

Icon

Queue

Chapters 16-21

Evaluate Mr. Kasigi as both a person and an assistant principal.

What causes Darryl to change his opinion of Cap?

Choose a question from the novel list.

Vocabulary 22-26

- Beseeching
- Idealism
- Bandwagon
- Inscription
- Appalled

Chapters 22-26

- How does Garland Farm look to Cap when they return?
- Whose fault is it that Cap misused the Student Activity Fund? Is it more than one persons.
- How does Sophie come to the conclusion that Cap sent the bracelet? How does this make her feel?

Vocabulary Chapters 27-31

- Supernova
- Askew
- Harried
- Quell
- Distraught

Chapters 27-31

What is Zach's reaction when he discovers what happened to the Student Activity Fund money?

Do you think Rain did the right thing with Garland Farm? Explain your thoughts.